



MICHIGAN POTASH COMPANY, LLC

People. Providing. Strengthening. Securing.

OVERVIEW MEMORANDUM June 2018

Ensuring the future of our farmers

Over the next 40 years,
we need to produce more
food than the last 8,000
years combined,"

—United Nations
World Food Program

About Michigan Potash

Michigan Potash is a US, family owned, minority owned company responsibly controlling the United States' strategic and critical mineral (H.R.520) potash, leading America into a new era of domestic production, self reliance, and food security.

One of the largest mineral discoveries in North America, presented before the United States Congress Department of Natural Resources, and featured by the United States Geological Survey, the US Potash Project, with a purported 65 Billion dollars of in the ground measured value is the **United States transformative strategic, critical, infrastructural, agricultural, natural resource project.**

The United States is one of the World's largest consumers of potash and is over 95% import reliant. Principle supply coming from only 4 global producers, which includes 1 in Russia and 1 in Belarus, who at times are antagonistic to our nation. Potash is the tightest controlled commodity in the world, yet it is required to grow our food. It is required to support our corn and soybean farmers. Especially now, when competitive demand for potash and food exports are coming from China, Brazil, and India.

The United States Strategic Reserve of Potash in New Mexico ceased material production in 2016.

United States' farms require 11 Million tons every year. We produce 300,000 tons domestically.



**US POTASH DEMAND:
11 Million Tons**

The U.S. produces 40% of the world's maize and 36% of the world's soybeans. These crops are among the highest potash consuming cash crops.

The US Defense Production Act mandates Infrastructural support for the distribution of potash for which only Michigan can provide based on its location.

From Farmer to Farmer

The Michigan Potash ore is the highest grade in the world and is strategically and critically located in a State with established infrastructure strength.

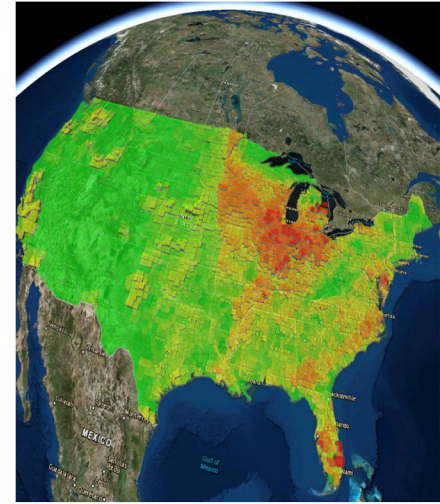
A poor rural township in Western Michigan controls the strategic Mineral that has the power to provide for themselves while transforming the United States' import reliance for the World's tightest controlled commodity. From Farm to Farm. From Farmer to Farmer.

Michigan's established sustainable advantages to our farmers cannot be displaced; perpetually providing a low cost source of potash, when and where it is needed during commodity floors and global political and economic shifts.

\$ 700 Million investment enabling up to \$ 350 Million in Agricultural related revenue and new GDP sustainable for over 150 years. Creating 300 construction jobs and 150 direct jobs.

Established Operation Established Product Established Sales Established Management

Potash Consumption



Ready to Build

One of America's largest agricultural projects, procuring steel and equipment and services from Indiana, Wisconsin, Ohio, and Illinois, and putting to work trade shops in all directions, including Michigan's largest trade employer; all for a product that our Rust Belt Farmers need.



United States EPA and the Michigan Department of Environmental Quality have approved the principle area permit allowing operational progression and construction.



Al Millward, VP of Production with Ward Forquer, VP of Potash Markets

The world's highest grade ore is controlled by Michigan Potash in the corn belt
The size of the ore and market location, provides almost unlimited, transformative growth potential with virtually no decline.

Potash: Michigan's next billion-dollar industry?

“One of the things that makes this so valuable is that it is an incredibly rich deposit that is in easy reach of the enormous demand from Midwest corn and soybean farmers.”

— Dr. William B. Harrison, director of the Michigan Geological, Repository for Research and Education at WMU



Scott St. Germaine, President of Operations, Ward Forquer, VP of Potash Markets, and Chris Gable of MAC, a potash retailer.

Michigan Farmer

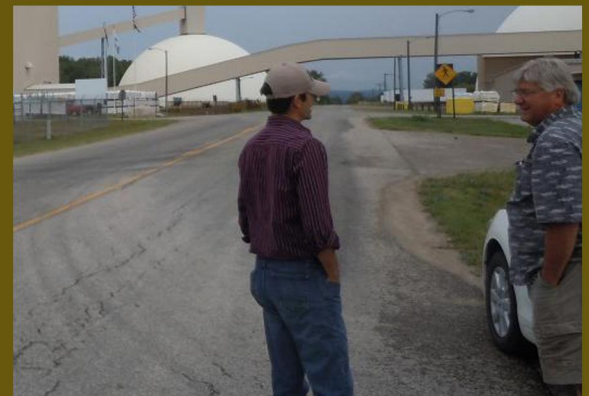
Source: Michigan Farmer Magazine (May 2018).

“We utilized old and rescued geological data to identify a strategic and critical resource that actually strengthens the US balance of trade, helps our US farmer, and potentially impacts food security.

The world’s youngest commercial discovery of potash, is the highest quality ore, globally speaking, and it resides in the United States cornbelt.

The control of a product in the hands of very few creates price control around a resource that is needed by the United States to sustain our farmers and the work that they do to feed our children.”

Theodore A. Pagano, Founder and CEO,
Before the 113th Congress of the United States.



Theodore A. Pagano, Founder and CEO, is a Native American Entrepreneur. He received his geology degree from Notre Dame, Indiana via BIA-DOE merit scholarships. He is shown with Andy Van Alst, VP of Land. A potash dome in Hersey Michigan is in the background.

United States farmers need 11 Million Tons of Potash every year, and virtually all of it is imported.

*"At current market prices, the deposit is estimated to be worth **\$65 billion**. The high quality of the mineral resource has the potential to create a multibillion-dollar industry in Michigan that would **surpass the state's historical oil and gas production revenues**, as well as create several hundred jobs in Osceola and Mecosta counties, where the deposit is located."
- **United States Geological Survey (USGS)***

Strategic, Critical, and Import Reliance

The United States Secretaries Known Potash Area, discovered in 1926 and protected going into WWII in 1939, materially ceased muriate of potash production in 2016, accelerating United States Import Reliance to over 95%, a level not recognized since World War I.

Michigan Potash is an infrastructure project. As proposed, in US HR 520, the Strategic and Critical Production Act, specifically identifies domestic mines for agricultural and manufacturing purposes as infrastructure projects, and "To require the Secretary of the Interior and the Secretary of Agriculture to more efficiently develop domestic sources," whereby, "certain domestic mines that, as determined by the lead agency, will provide strategic and critical minerals shall be considered to be an infrastructure project, as described in Executive Order 13604 (5 U.S.C. 601).

Further, the US Defense Production Act of 1950, specifically mandates infrastructural distribution of commercial fertilizer, specifically potash, for which only Michigan can provide given its location. The US Defense Production Act mandates the executive branch to facilitate loan guarantees concerning the same, which may facilitate specifically, Michigan provided its strategic location.



Potash included in US government's critical minerals list

POTASH

>95%



Contact Michigan Potash

ir@mipotash.com
(231) 577-9616
www.mipotash.com

 MICHIGAN POTASH COMPANY, LLC

